

# Supporting Solid Fill Planes

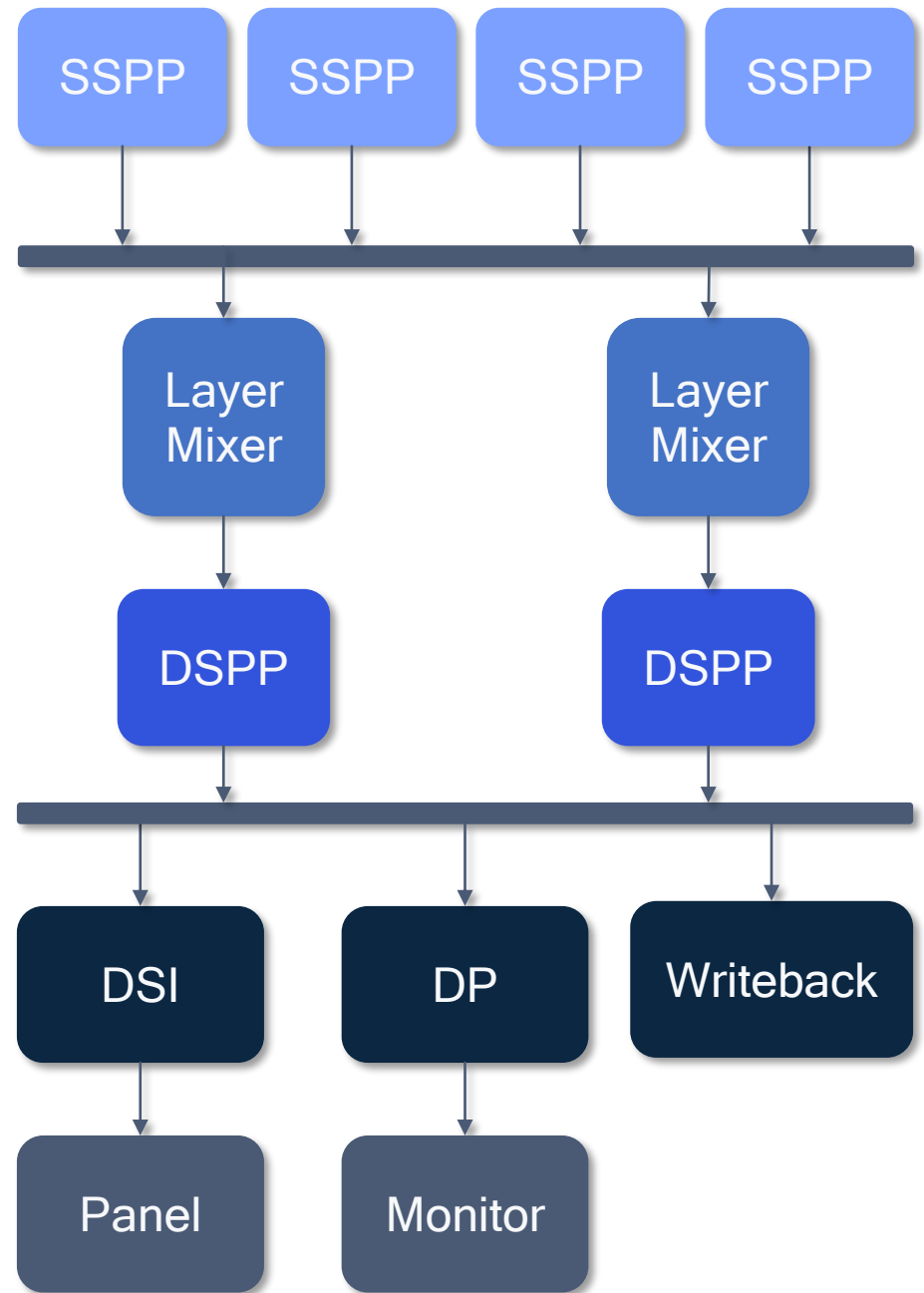
Jessica Zhang

Abhinav Kumar

[quic\\_jesszhan@quicinc.com](mailto:quic_jesszhan@quicinc.com)  
[quic\\_abhinavk@quicinc.com](mailto:quic_abhinavk@quicinc.com)

# Background

MSM DPU HW Blocks



# Background

## Android HWC HAL SOLID\_COLOR Hint

```
/**
 * The device must render this layer using the color set through
 * setLayerColor. If this functionality is not supported on a layer
 * that the client sets to SOLID_COLOR, the device must request that
 * the composition type of that layer is changed to CLIENT upon the
 * next call to validateDisplay.
 *
 * Upon validateDisplay, the device may request a change from this
 * type to CLIENT.
 */
SOLID_COLOR = 3,
```

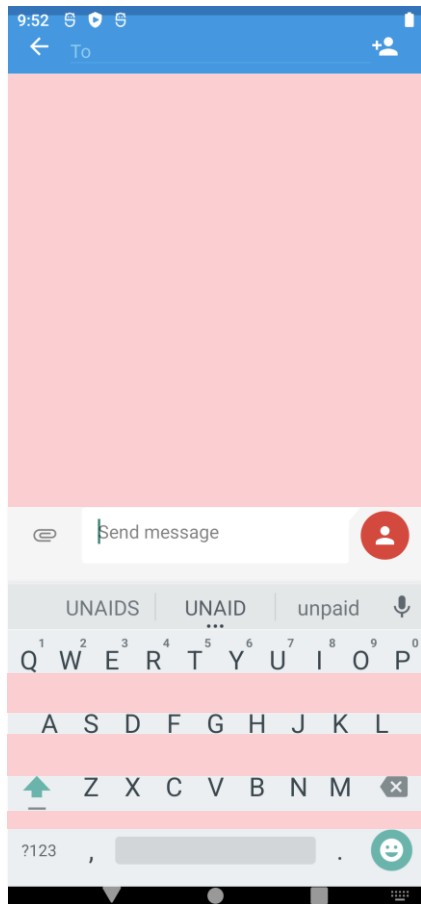


Display 4630947039571902851 (active) HWC layers:

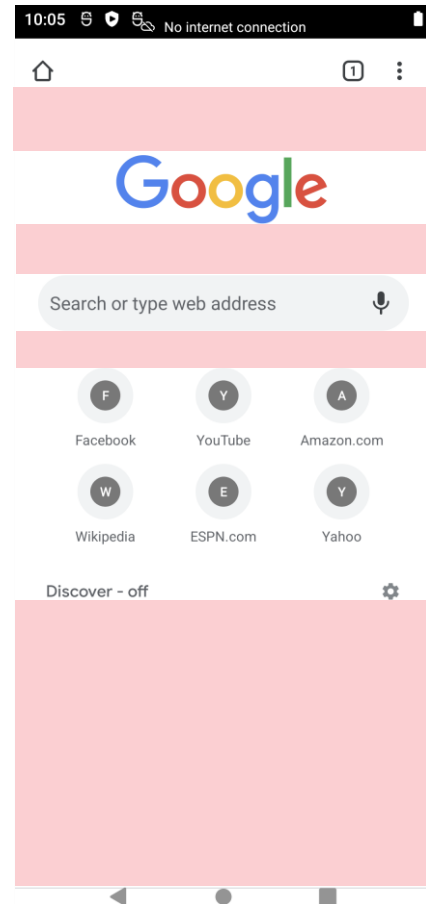
Layer name	Z	Window Type	Layer Class	Comp Type	Transform	Disp Frame (LTRB)	Source Crop (LTRB)	Frame Rate (Explicit)	Seamlessness
Letterbox - bottom#136									
rel -20000	0			SOLID_COLOR		0 2009 1080 2400	0.0 0.0 0.0 0.0		
				[ ]					
com.quicinc.fullscreenapp/com.quicinc.fullscreenapp.FullscreenActivity#150									
rel 0	1			DEVICE		0 1080 2009	0.0 0.0 1080.0 2009.0		
				[*]					
ScreenDecorHwcOverlay#62									
rel 0	2024			DISPLAY_DECORATION		0 0 1080 2400	0.0 0.0 1080.0 2400.0		
				[ ]					

# Background

## Downstream Power Numbers



Messenger



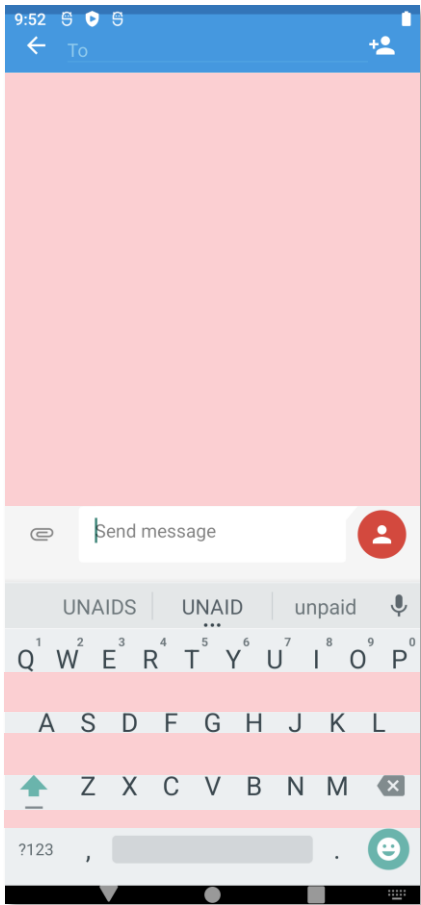
Google Chrome

## Power Usage

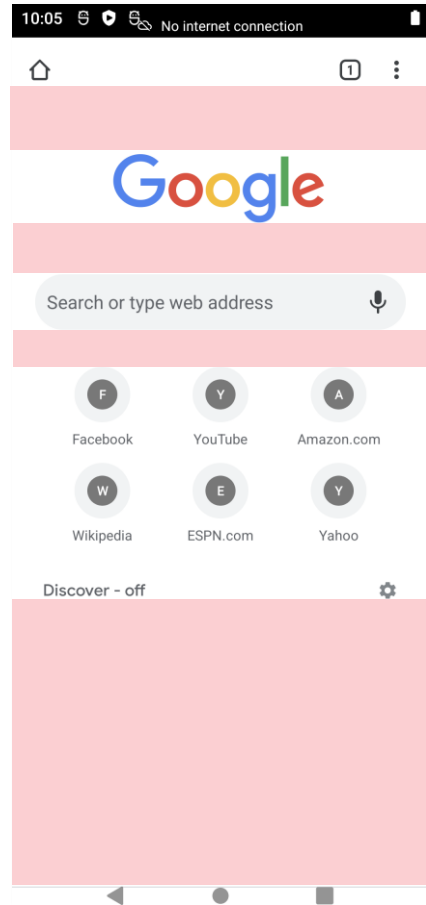
Use Case	DDR Power		Memory Bus Traffic	
	<i>I (mA)</i>	<i>Power (mW)</i>	<i>I (mA)</i>	<i>Power (mW)</i>
<b>Messenger</b>	99.07	113.74	645.57	604.9
<b>Messenger-split</b>	69.23	77.6	618.56	576.06
<b>Chrome</b>	74.82	85.23	622.11	580.33
<b>Chrome-split</b>	70.12	78.84	615.46	574.08

# Background

## Downstream Power Numbers



Messenger



Google Chrome

## Power Usage

Use Case	DDR Power		Memory Bus Traffic	
	<i>I (mA)</i>	<i>Power (mW)</i>	<i>I (mA)</i>	<i>Power (mW)</i>
<b>Messenger</b>	99.07	113.74	645.57	604.9
<b>Messenger-split</b>	69.23	77.6	618.56	576.06
<b>Chrome</b>	74.82	85.23	622.11	580.33
<b>Chrome-split</b>	70.12	78.84	615.46	574.08

# Implementation

## DRM uAPI Changes

- New DRM properties
  - `pixel_source` - enum property
  - `solid_fill` - blob property
- Pixel sources
  - `DRM_PIXEL_SOURCE_NONE`
  - `DRM_PIXEL_SOURCE_FB`
  - `DRM_PIXEL_SOURCE_SOLID_FILL`
- Solid Fill blob
  - Takes RGB323232 color
- Loosen DRM atomic checks

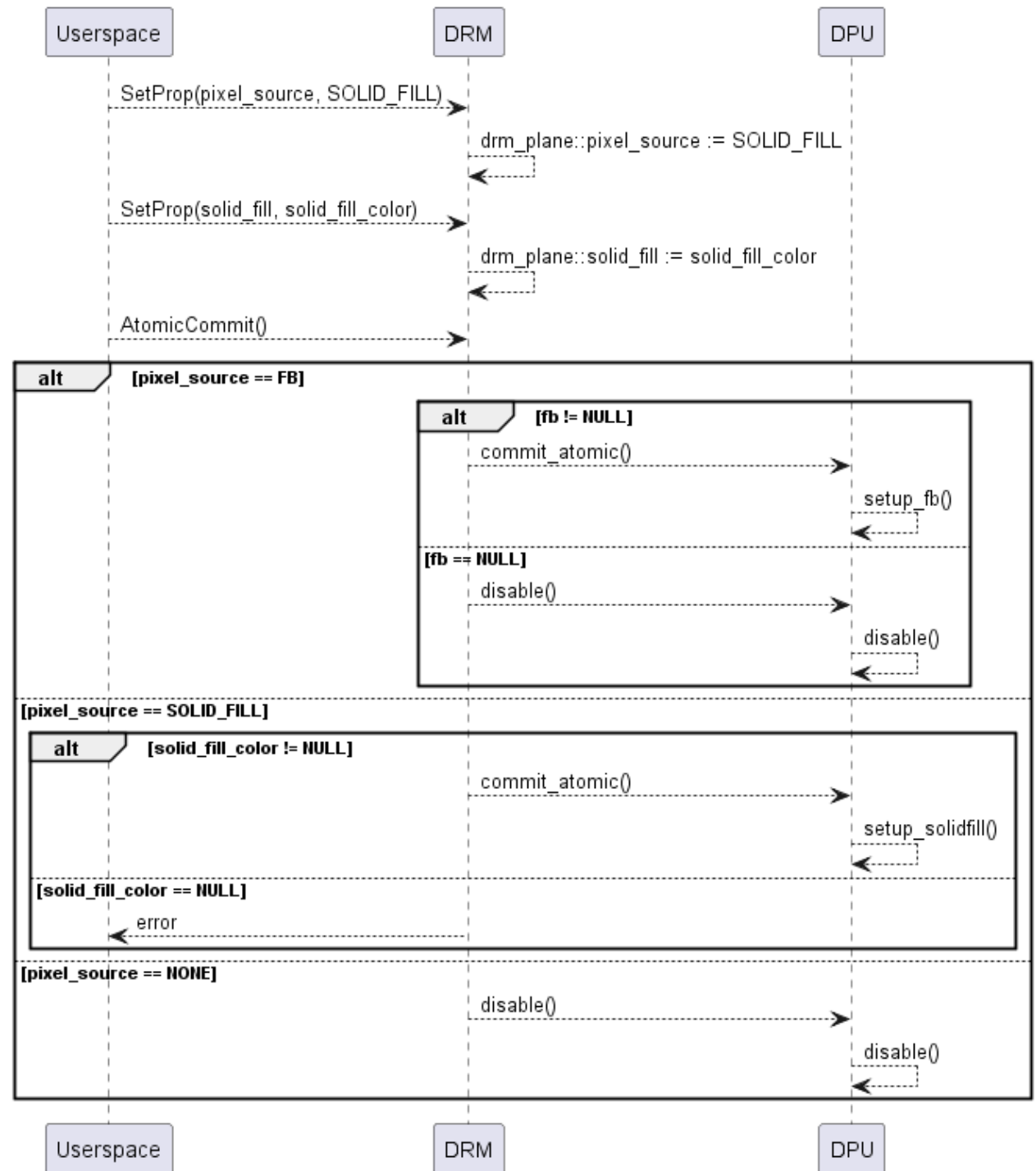
## Support for Solid Fill Planes

Submitted by [Jessica Zhang](#) on Oct. 28, 2022, 10:59 p.m.

#	Name	TC	A	F	R	T
01	[RFC,v6] drm: Introduce <code>pixel_source</code> DRM plane property	2	2			
02	[RFC,v6] drm: Introduce solid fill DRM plane property	2				
03	[RFC,v6] drm: Add solid fill pixel source	1	1		1	
04	[RFC,v6] drm/atomic: Add pixel source to plane state dump	1			1	
05	[RFC,v6] drm/atomic: Add solid fill data to plane state dump	2			1	
06	[RFC,v6] drm/atomic: Move framebuffer checks to helper	0			1	
07	[RFC,v6] drm/atomic: Loosen FB atomic checks	4				
08	[RFC,v6] drm/msm/dpu: Allow NULL FBs in atomic commit	1			1	
09	[RFC,v6] drm/msm/dpu: Use DRM <code>solid_fill</code> property	1			1	
10	[RFC,v6] drm/msm/dpu: Add solid fill and pixel source properties	0			1	

# Implementation

## Sequence Diagram



# References

## Further Reading

- Solid Fill Patch Series
  - Patchwork: <https://patchwork.freedesktop.org/series/110283/>
  - Email archive: <https://lists.freedesktop.org/archives/freedreno/2023-August/027950.html>
- Qualcomm Developer's Network Blog
  - <https://developer.qualcomm.com/blog/how-reduce-power-consumption-qualcomm-displays-using-solid-fill-planes>



# Thank you

**Qualcomm**

Follow us on: [in](#) [twitter](#) [instagram](#) [youtube](#) [facebook](#)

For more information, visit us at:

[qualcomm.com](http://qualcomm.com) & [qualcomm.com/blog](http://qualcomm.com/blog)

Nothing in these materials is an offer to sell any of the components or devices referenced herein.

©2018-2023 Qualcomm Technologies, Inc. and/or its affiliated companies. All Rights Reserved.

Qualcomm is a trademark or registered trademark of Qualcomm Incorporated. Other products and brand names may be trademarks or registered trademarks of their respective owners.

References in this presentation to "Qualcomm" may mean Qualcomm Incorporated, Qualcomm Technologies, Inc., and/or other subsidiaries or business units within the Qualcomm corporate structure, as applicable. Qualcomm Incorporated includes our licensing business, QTL, and the vast majority of our patent portfolio. Qualcomm Technologies, Inc., a subsidiary of Qualcomm Incorporated, operates, along with its subsidiaries, substantially all of our engineering, research and development functions, and substantially all of our products and services businesses, including our QCT semiconductor business.

Snapdragon and Qualcomm branded products are products of Qualcomm Technologies, Inc. and/or its subsidiaries. Qualcomm patented technologies are licensed by Qualcomm Incorporated.